



Georgia Department of Transportation



• ECONOMIC IMPACT REPORT FOR •
DOUGLAS MUNICIPAL AIRPORT



September 2020

According to Site Selection Magazine, Georgia is ranked as the #1 state for doing business.

Georgia Airports Mean Business.

Airports in Georgia generate positive economic impacts as well as support many other sectors of local and state economies. In the summer of 2019, the Georgia Department of Transportation undertook a statewide study to estimate the annual economic impact of 102 study airports. The study estimated economic impacts for seven commercial airports and 95 general aviation airports. This report includes impacts related to Douglas Municipal Airport and summarizes all Statewide Airport Economic Impacts.

Annual Economic Impacts for Douglas Municipal Airport

Residents, businesses, and visitors benefit from the state's well-developed airport system. While supporting transportation, healthcare, tourism, and commerce, airports contribute to the economy. The Economic Impact Study identified specific economic impacts associated with the Douglas Municipal Airport and other airport benefits. Key impacts for the Douglas Municipal Airport follow.

- Annual Visitors **10,804**
- Employment Supported **102**
- Annual Payroll **\$3,908,000**
- Annual Spending **\$7,145,000**
- Annual Economic Impact **\$11,053,000**
- Airport-Supported Annual State & Local Sales & Income Tax Revenues **\$469,550**

Economic Impacts for Douglas Municipal Airport

The table below provides information on the sources of annual economic impact estimated for the Douglas Municipal Airport. For more information on the impacts reported here, consult the study's Technical Report available at dot.ga.gov/IS/AirportAid.

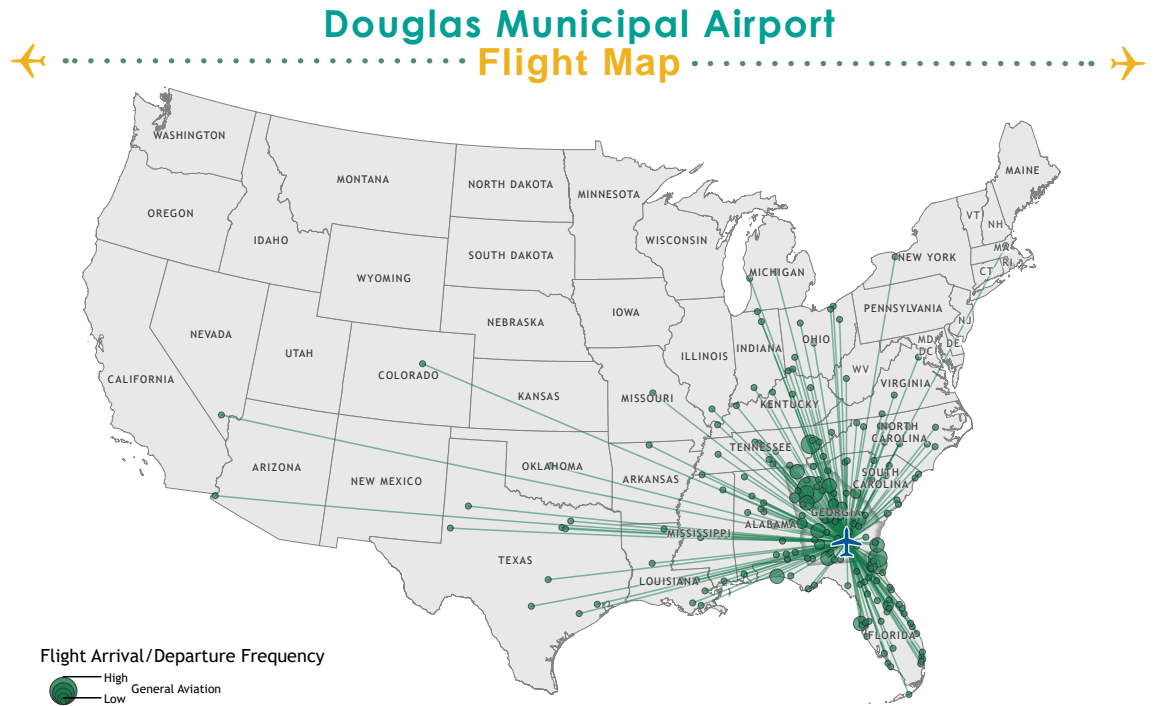
Annual Economic Impacts for Douglas Municipal Airport

	Employment	Payroll	Spending	Total Economic Activity
Airport Management & Business Tenants	71	\$3,066,900	\$5,472,400	\$8,539,300
Capital Investment	5	\$145,000	\$593,600	\$738,600
General Aviation Visitor Expenditures	26	\$696,100	\$1,079,000	\$1,775,100
Total	102	\$3,908,000	\$7,145,000	\$11,053,000

Georgia Airports Support Connectivity

A flight from a Georgia airport is a gateway to over 40,000 worldwide airports, including over 19,000 airports in the US alone. When employers seek to relocate or expand, proximity to an airport is among the top 10 factors they consider in their decision making. Georgia's tourist industry also depends on the efficiency of air travel.

This map depicts destinations for flights departing from and arriving at Douglas Municipal Airport on any given day. This information is generated from the FAA's National Offload Program (NOP). Flights represent only a fraction of all destinations that can be reached directly from the airport. The map helps to show how the airport supports the travel needs of businesses, visitors, and residents of the airport's service area.



Top Five Destinations for Douglas Municipal Airport

- 1** Savannah, Georgia
- 2** Atlanta, Georgia
- 3** Jacksonville, Florida
- 4** Knoxville, Tennessee
- 5** Destin, Florida

Statewide Economic Impacts

Shown below are total annual statewide economic impacts. All economic impacts shown in this report for Hartsfield-Jackson Atlanta International Airport were obtained from a separate study for that airport conducted by the City of Atlanta. As shown, when all Georgia airports are considered, total annual statewide economic impacts are estimated at 450,502 jobs, \$9.2 billion in annual payroll, and \$73.7 billion in annual economic activity.

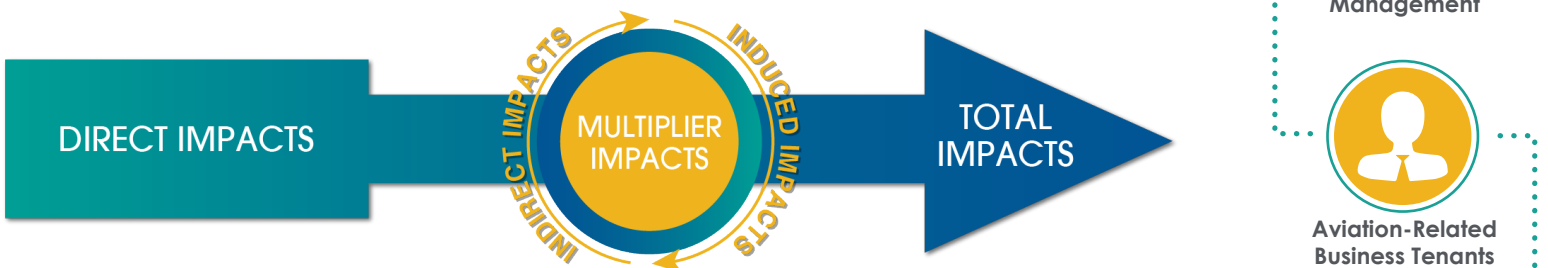
Statewide Economic Impacts All System Airports

	Hartsfield-Jackson Atlanta International Airport*	Commercial Study Airports	General Aviation Study Airports	State Total
Employment	383,242	52,376	14,893	450,502
Payroll	\$16.7 billion	\$1.3 billion	\$271 million	\$9.2 billion
Economic Activity	\$66.8 billion	\$2.2 billion	\$828 million	\$73.7 billion

*2016-2017 Technical Report, City of Atlanta Economic Impact Study

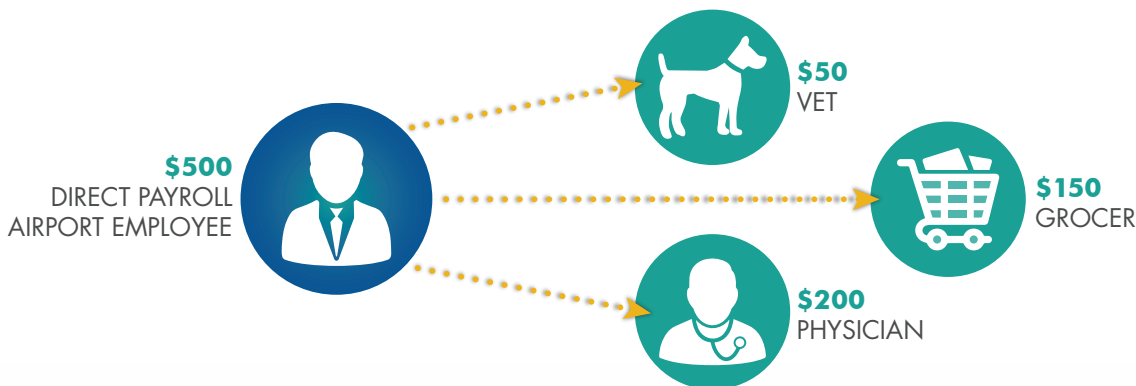
Economic Impact Categories and Measurements

The study identified impacts related to airport management (day-to-day airport operations), aviation-related business tenants, average annual capital investment, expenditures by visitors arriving on general aviation aircraft, and expenditures by visitors arriving on scheduled commercial airline flights. For each of these five categories, impacts were measured for **employment, payroll, spending, and annual economic activity**. Annual economic activity is the sum of payroll and spending. In addition, the study estimated state and local tax revenues that are generated by airport-supported activities.



Study Methodology

Data collection and survey efforts identified **direct** economic impacts in each of the five impact categories using an approved FAA methodology. A state input/output model (**IMPLAN**) was used to estimate additional **indirect and induced** impacts, sometimes referred to as multiplier impacts. Combined, direct plus indirect/induced impacts equal total state or airport specific economic impacts.



The direct impacts that start at the airport multiply within the state economy. The \$150 of direct impact spent with the grocery results in additional payroll (induced impacts) for the grocer's employees. As the grocery buys supplies, this additional business to business spending results in indirect impacts.

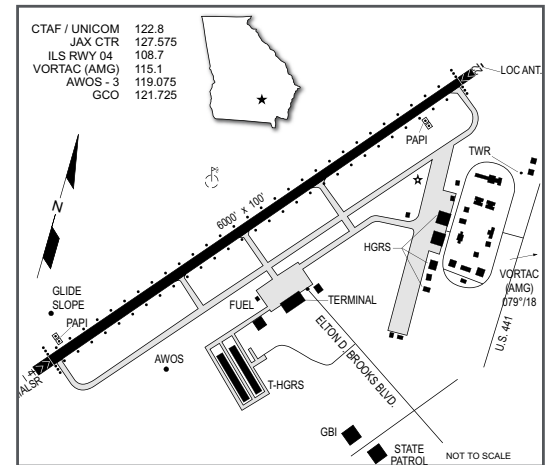
Visitors Arriving on Commercial Flights

Douglas Municipal Airport

The Douglas Municipal Airport is located in Coffee County in southeastern Georgia. The city of Douglas is located approximately 44 miles east of Tifton and 47 miles northwest of Waycross. The population of Coffee County is about 43,000. The primary access to the airport from the north and south is via U.S. Highways 441 and 221 and Georgia Highways 31 and 135.

The airport is owned and operated by the City of Douglas. The airport is served by a single runway, Runway 4/22 which is 6,000 feet long, making it capable of serving most types of business jets. There are five different aviation related businesses that provide services at the airport. These businesses provide a variety of aerial application, flight instruction, aircraft maintenance, and emergency medical services. Businesses located at the airport include Purvis Flying services, South GA Flyers, B-52 Group, Harless, Aviation, and Air Evac 90. Purvis Flying Services is an aerial applicator based at the airport, and South GA Flyers provide flight instruction. The B-52 Group and Harless Aviation both provide aircraft maintenance services. Air Evac 90, an EMS operator, is the airport's largest business tenant; they support over 14 jobs, supporting the area's vital services and making significant economic contributions.

The airport accommodates a variety of aviation-related activities including corporate/business jets, recreational flying, agricultural spraying, prisoner transport, forest fire fighting, and experimental aircraft.



Examples of How Douglas Municipal Airport Supports its Community

There is a good chance you benefit from different activities that the airport supports. Airports support healthcare and emergency services. Airports support the state's agricultural and forestry industries, and power companies rely on airports to keep electricity flowing. State and federal agencies use airports to protect the environment, and law enforcement benefits from airports. Businesses throughout Georgia rely on airports to improve their efficiency. Examples of how the airport benefits the community follow.

Emergency Services: From its base of operations at the airport, Air Evac Lifeteam 90 serves most of south central Georgia. The company transports about 250 to 300 patients per year, about one per day. The company transports patients from local hospitals to larger medical facilities either within or beyond the state. As with other similarly sized medical facilities in small communities, Douglas is unable to maintain a full complement of medical specialists locally. Therefore, depending upon the patient's condition, it is necessary to fly patients from the Douglas area to larger medical facilities. The company also flies trauma victims to area hospitals, providing, in many instances, life-saving services. About 50 percent of the patients flown by Air Evac are hospital transfers and 50 percent are trauma victim transports. By supporting medical and emergency services, the airport supports the quality of life for residents.

Aerial Applicators: Agriculture is an important part of Georgia's economy. Georgia is home to a diverse array of food and fiber products and an assortment of related processing companies. Together, agriculture and its related industries in Georgia, directly and indirectly, account for over \$74.3 billion in economic output and over 411,500 jobs. Georgia is host to over 42,000 farms, encompassing more than 9 million acres; 88 percent of these farms are considered small businesses. The Bureau of Economic Analysis reports nearly 35,000 farm proprietors in the state. Aviation supports agriculture in Georgia. Aerial applicators spray crops and timber to prevent the spread of disease and pests. Crops are also fertilized from the air. Purvis Flying Service, an aerial applicator, is based at the airport. They log between 400 to 500 hours supporting local farms, treating 30,000 to 50,000 acres annually. The primary crops they treat include blueberries, cotton, corn, and occasionally they conduct forestry-related spraying.

Business Use: Airports are tools used by a wide variety of employers to increase many aspects of their efficiency. When businesses consider where they locate or expand, proximity to an airport is often a top consideration. Airports are also a contributor to an area's economic diversification and growth. Both local and visiting businesses rely on air travel to increase their efficiency. Airports can be used to help companies expand their market areas, reduce employee travel time, provide access for customers and suppliers, and tie together offices in multiple locations. Businesses that rely on and benefit from the airport include Precision Castparts Corporation Airfoils (manufacturing), Optima Chemical (construction), Elixir Extrusions (metal fabrication), Anderson GMC (car dealer), 1st Franklin Financial (loans), Brooks Auto Parts (NAPA Auto Parts), Fletcher Oil Company (petroleum), Ware Forest (lumber), R.W. Griffin (feed, seed, and fertilizer), and Douglas Asphalt Company (paving). By supporting these local businesses, the airport helps support many sectors of the local economy.

Medical/Healthcare: The nation's hospital system is shrinking; and, smaller/local hospitals find it challenging to retain a full complement of medical specialist on-staff. Aviation helps to backfill the void for various types of locally-based physicians. One example in Douglas is the orthodontists who operate the clinic for Smile Doctors Braces. These doctors fly to the area, making it more convenient for residents to obtain orthodontic services. Study research also shows that area hospitals rely on the airport for visiting physicians who provide respiratory care, as well as ear, nose, and throat specialists who arrive in the area by air.

THIS DOCUMENT WAS PREPARED BY

Jviation
900 S Broadway, Suite 350
Denver, Colorado 80209
303.524.3030
www.jviation.com

Data collection and analysis for this study took place before the onset of the COVID-19 pandemic in March 2020. Results reflect conditions at Georgia airports prior to that time.

FOR MORE INFORMATION PLEASE CONTACT

Georgia Department of Transportation Aviation Programs
600 West Peachtree Street NW
Atlanta, Georgia 30308
404.631.1990 | dot.ga.gov/IS/AirportAid
Email: aviationprograms@dot.ga.gov